



Northern Illinois University

2020 Census: Identification of Hard- to-Count Populations in Illinois

Sherrie J. Taylor

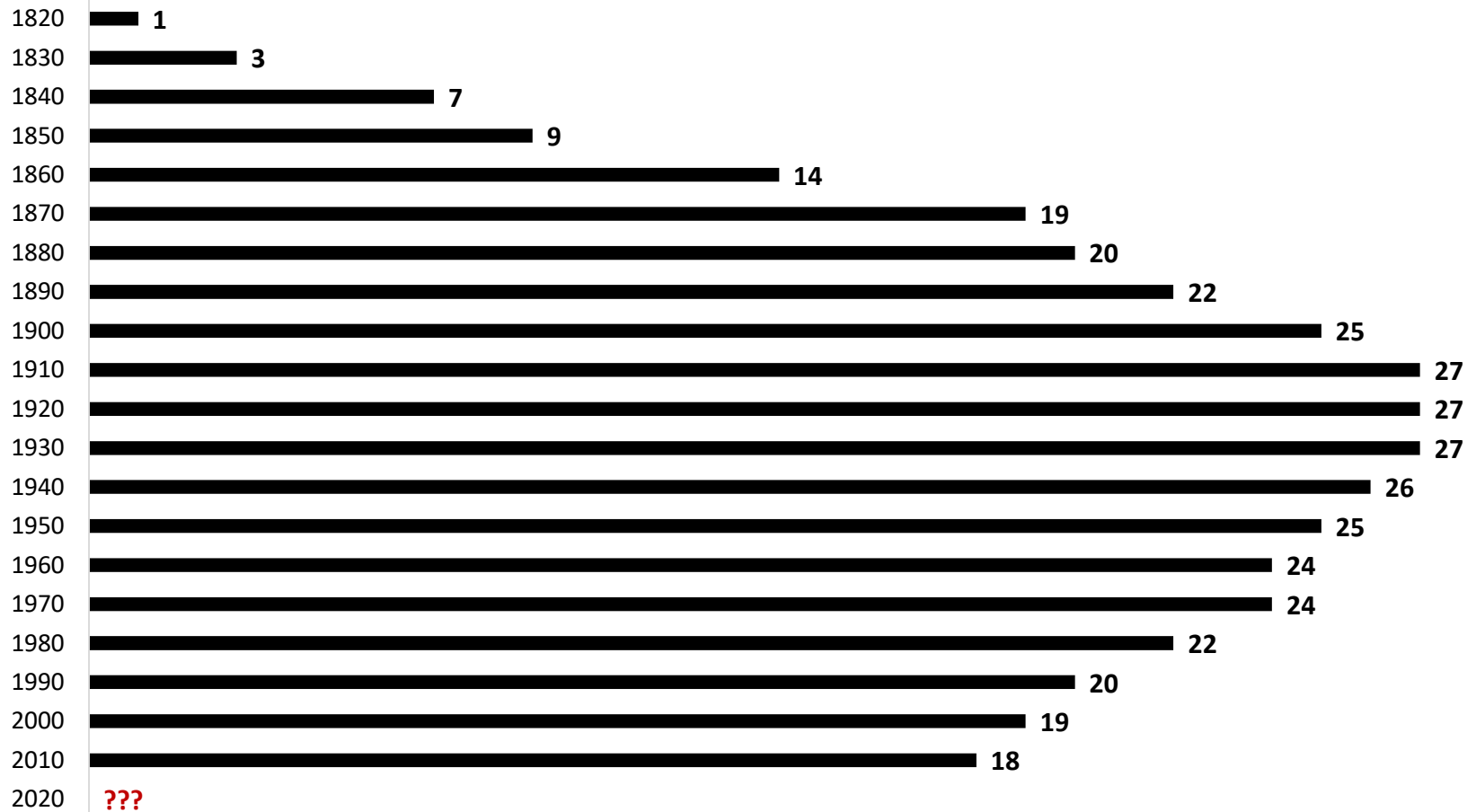
Senior Research Specialist & Interim Lead of the State Data
Center Network in Illinois

Center for Governmental Studies, NIU

SDC

The U.S. Census Bureau's
Premier Local Partner

Congressional District Seat History



Census Data Background

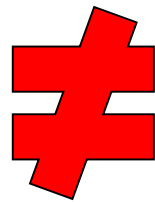


Short Form (Everyone)

- Age
- Ethnic Background (Hispanic)
- Household Relationships
- Race
- Sex
- Tenure (Homeowner or Renter)
- Vacancy Characteristics

Long Form (About 1 in 6 Households until 2000)

- Ancestry
- Disability
- Farm Residence
- Grandparents as caregivers
- Income
- Occupation
- Industry
- Labor Force Status
- Language spoken
- Marital status
- Migration
- Place of Birth
- Citizenship
- Year of Entry
- Place of Work
- Commuter
- School Enrollment
- Education Attainment
- Veteran Status
- Heating Fuel
- # of Rooms/Bedrooms in House
- Plumbing and Kitchen Facilities
- Telephone Service
- Units in Structure
- Utilities/Mortgage/Taxes/Insurance/Fuel Costs
- Value of home or monthly rent paid
- Vehicles available
- Year moved into residence
- Year structure built



2010



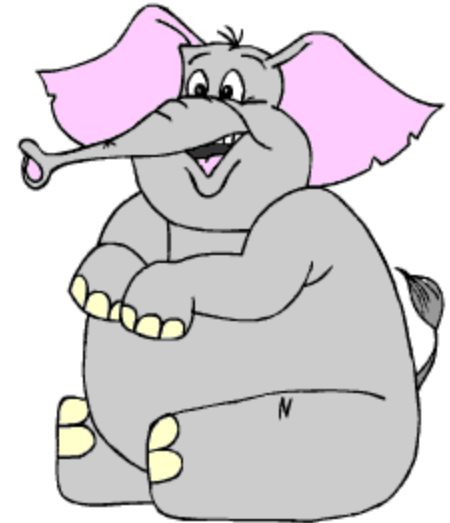
And then there's this....



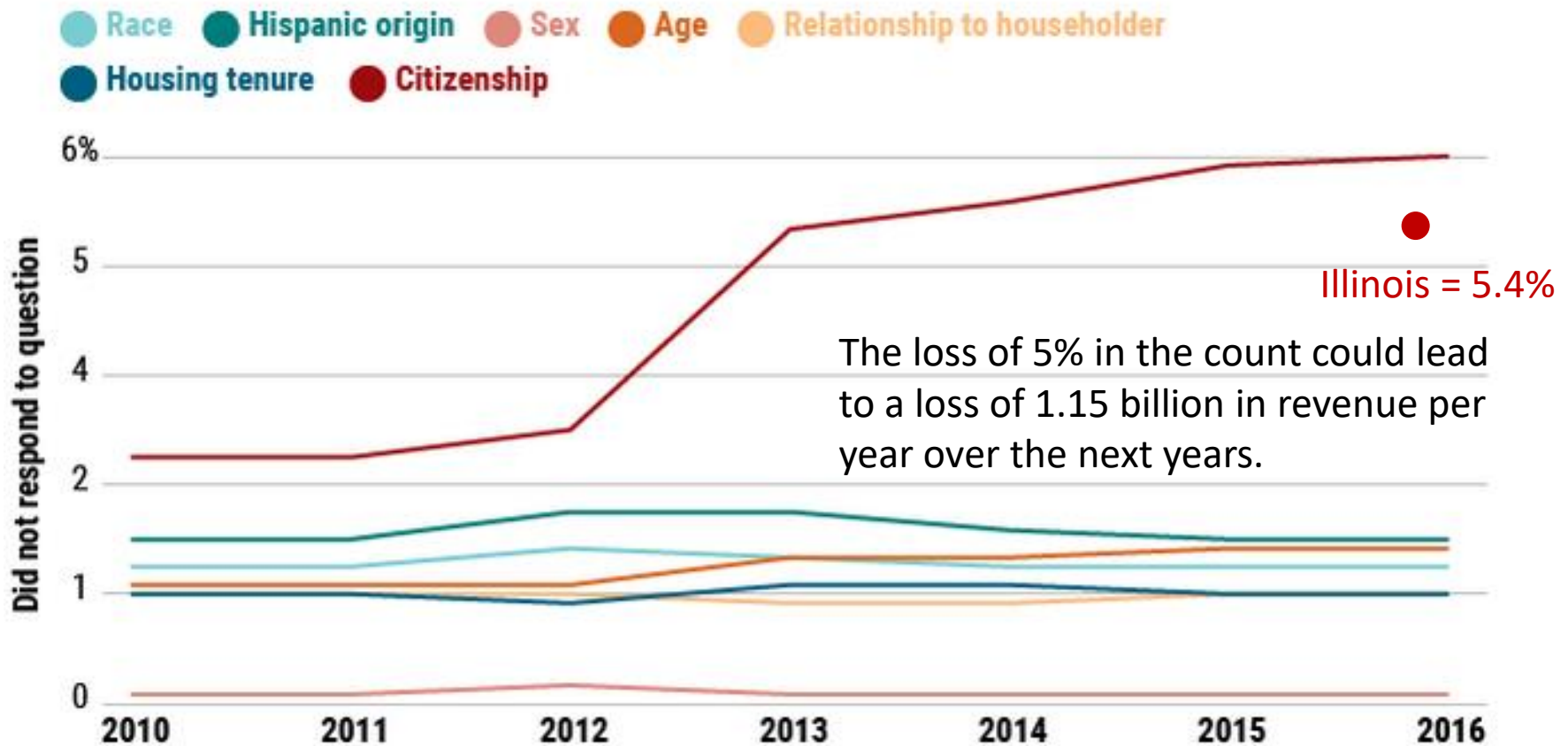
The American Community Survey Asks about Citizenship

Is this person a citizen of the United States?

- Yes, born in the United States
- Yes, born in Puerto Rico, Guam, the U.S. Virgin Islands, or Northern Marianas
- Yes, born abroad of U.S. citizen parent or parents
- Yes, U.S. citizen by naturalization – *Print year of naturalization* ↴
- No, not a U.S. citizen



Non-Response Rates

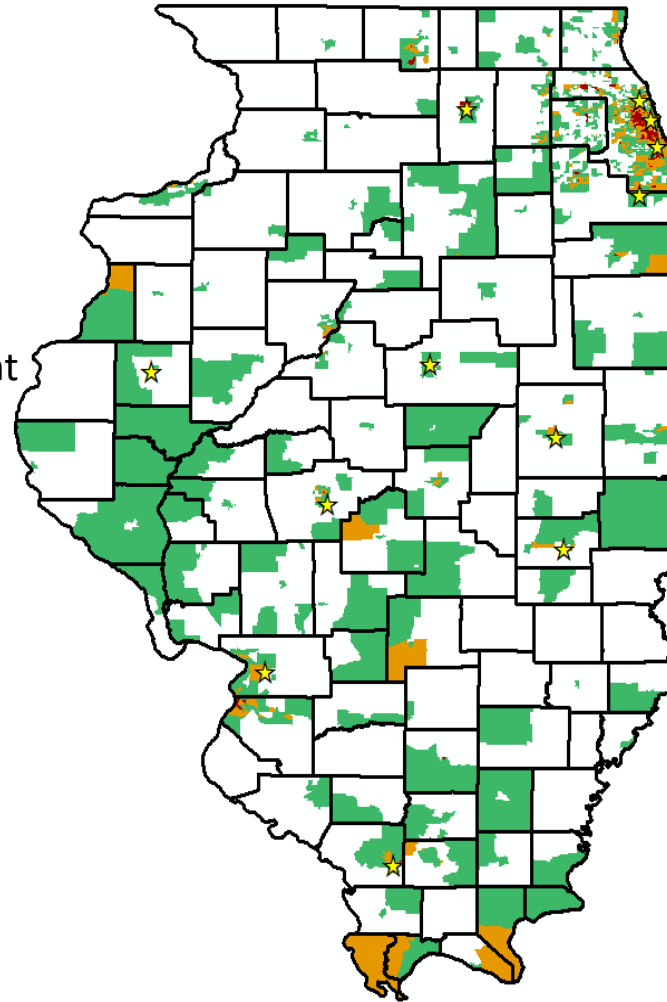


(GRAPH) D. MALAKOFF/SCIENCE; (DATA) WILLIAM P. O'HARE, GEORGETOWN UNIVERSITY CENTER ON POVERTY AND INEQUALITY

Hard-to-Count Populations



- Young and Mobile
- Vacant Housing
- Lower Income
- Children, especially under 5 years
- Renters
- LGBTQ
- Homeless
- Persons Angry or Distrust Government
- Foreign-born
- Undocumented Immigrants
- Limited English Speaking
- Lack of Internet
- Multi-Unit Structures
- Unemployed
- Crowded Households
- Public Assistance Recipients
- Minorities
- Non-Family Households
- New Residents
- No High School Diploma

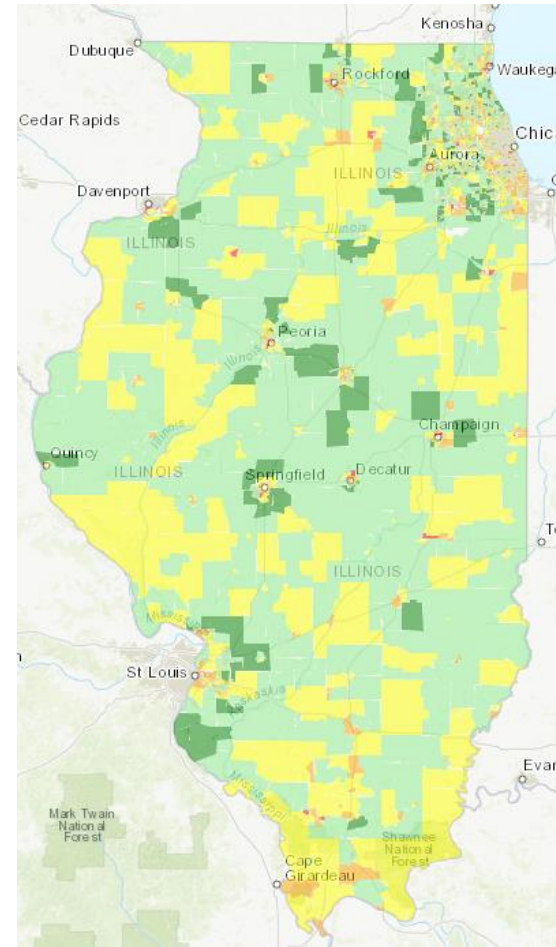


Hard-to-Count Population Index



Based on 15 data variables:

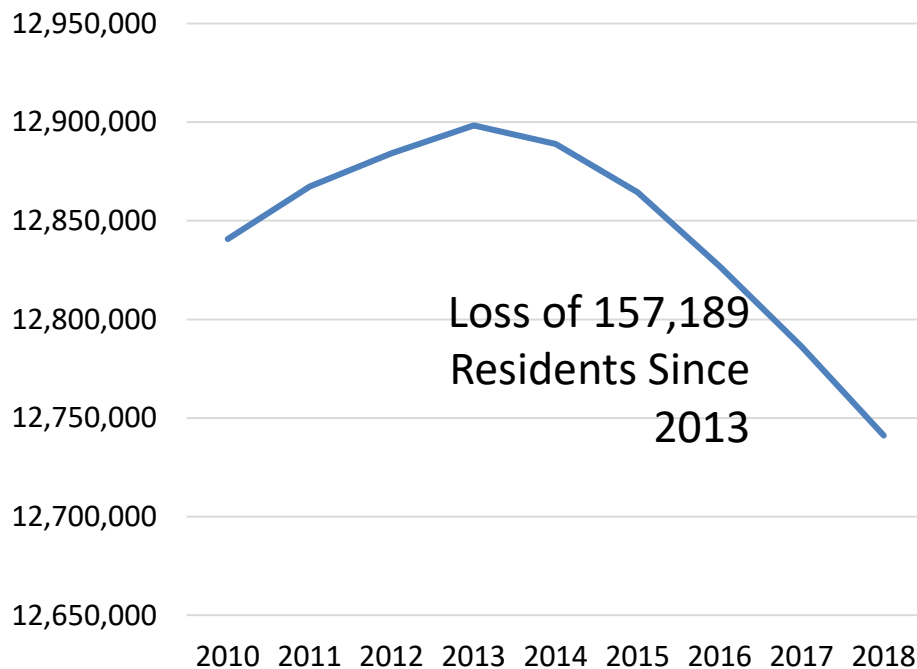
- Households without Internet
- Non-family Households
- Renter-Occupied Units
- Vacant Units
- Crowded Households
- Foreign-born Population
- No High School Diploma
- Population at/below 100% Poverty
- Population Receiving Public Assistance
- Unemployed
- Limited-English Speaking Households
- New Residents
- Population Under 5 Years Old
- Multi-Unit Structures with 3+ Units
- Young and Mobile



Population Loss



Illinois Population Trend



2010-2018

Illinois

Overall Change

-90,492

Births

1,294,578

Deaths

-866,111

International Migration

241,894

Domestic Migration

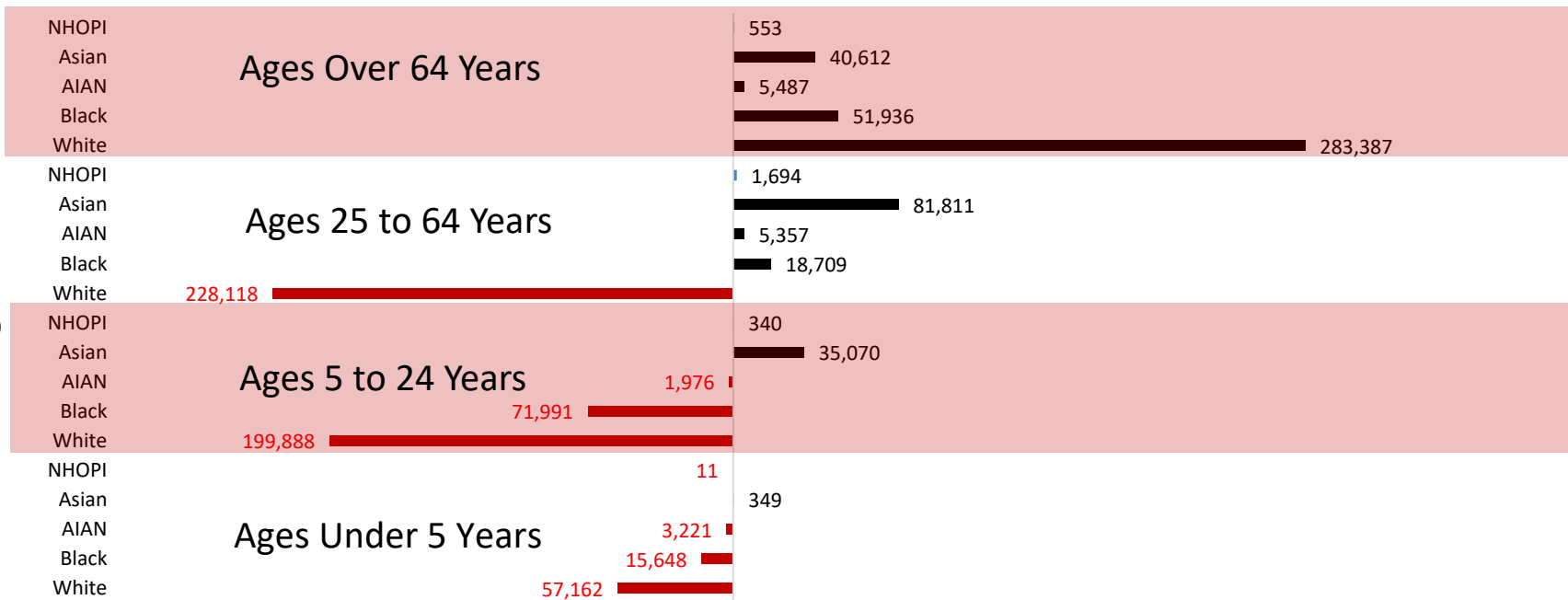
-761,837

IL Demographic Shifts 2010-18



	White	Black	American Indian or Alaska Native	Asian	Native Hawaiian or Pacific Islander	Hispanic
Change	-4.5%	-1.4%	2.8%	23.5%	17.4%	7.5%
Number	-372,097	-26,861	1,700	154,663	1,743	188,142

Change 2010-2018



Any Questions?



NORTHERN ILLINOIS UNIVERSITY

**Center for
Governmental Studies**

Outreach, Engagement, and Regional Development

Sherrie J. Taylor, MPA
Center for Governmental Studies, NIU
815-753-0925
taylor@niu.edu

