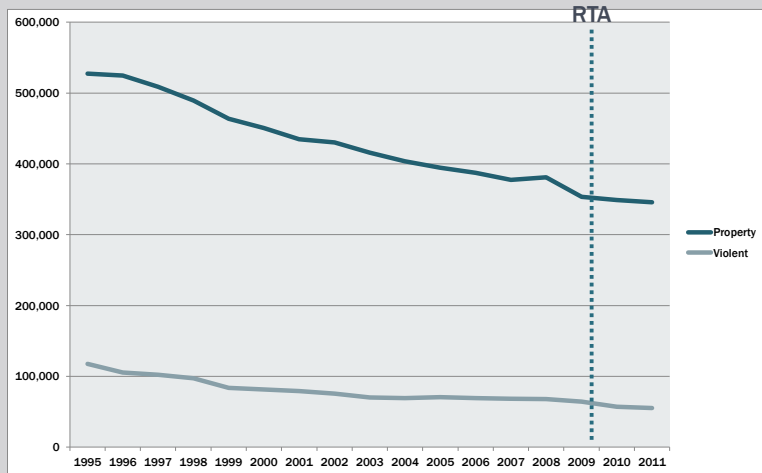
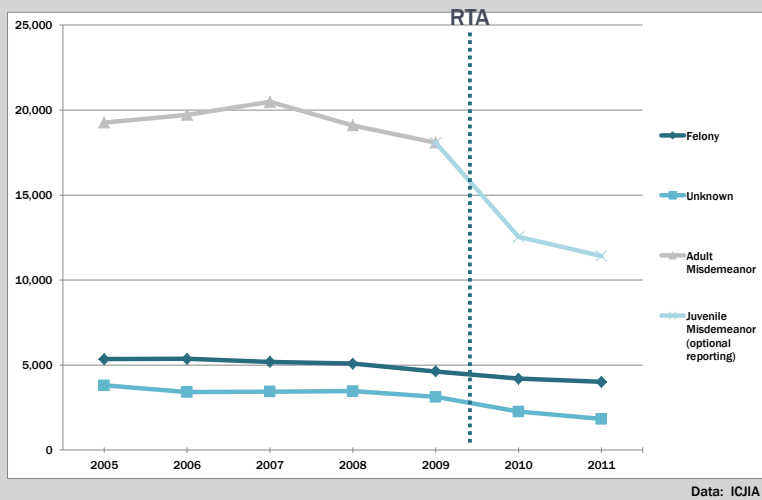


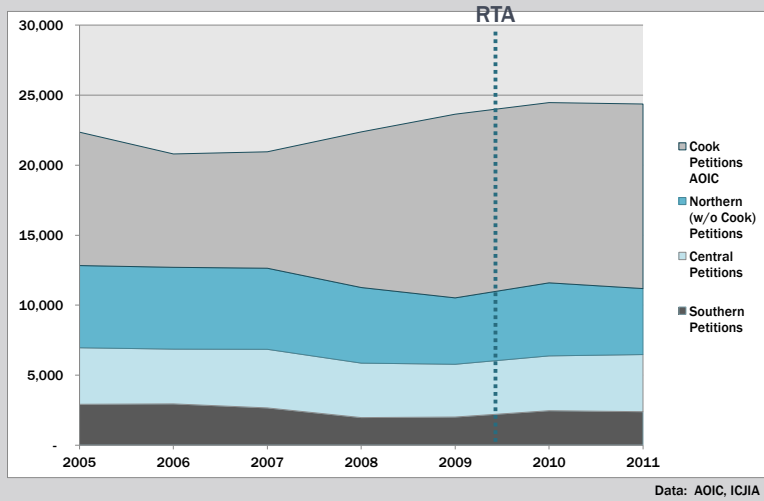
CRIMES REPORTED IN ILLINOIS 1995-2011



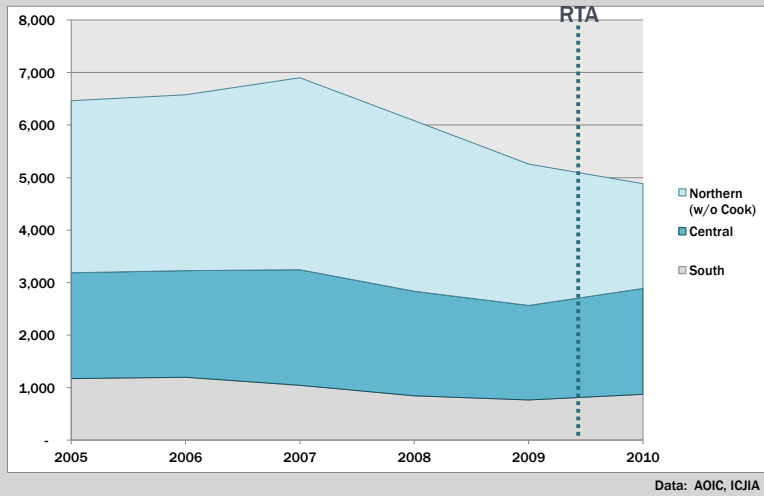
NUMBER OF 17-YEAR-OLD ARRESTS SINCE 2005



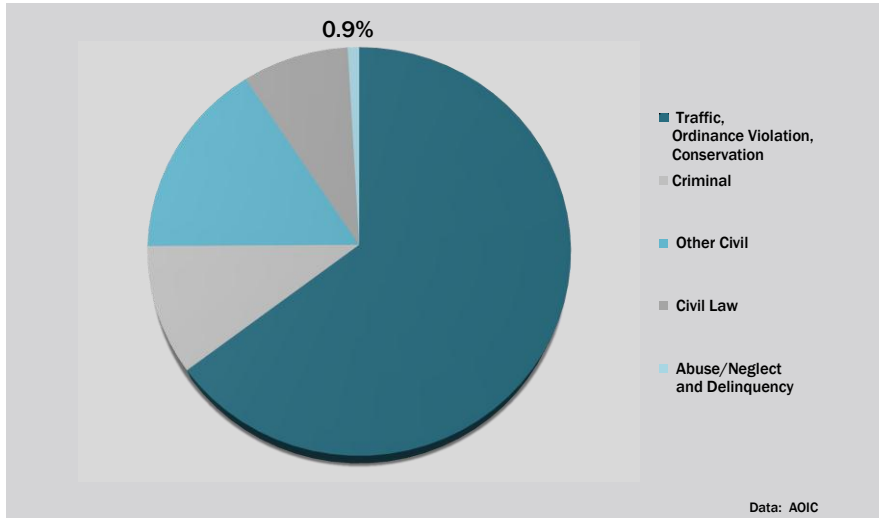
STATEWIDE JUVENILE PETITIONS 2005-2011



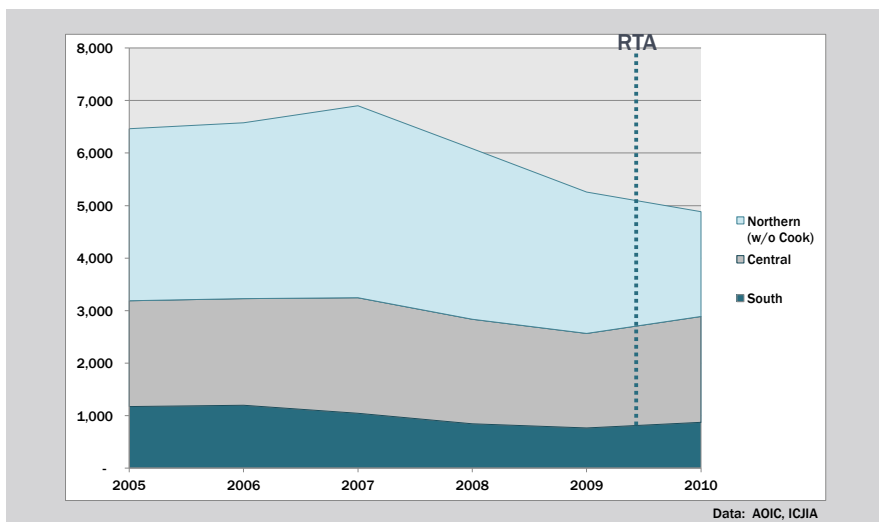
STATEWIDE DELINQUENCY ADJUDICATIONS 2005-2010



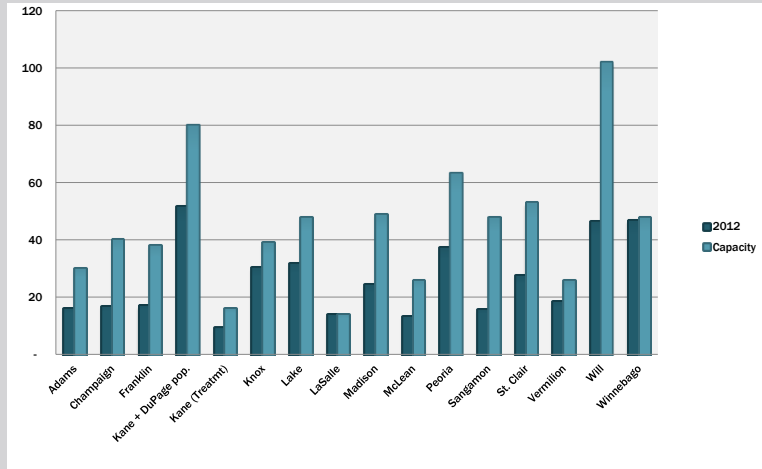
PROPORTION OF JUVENILE PETITIONS 2011 CASELOAD



STATEWIDE DELINQUENCY ADJUDICATIONS 2005-2010

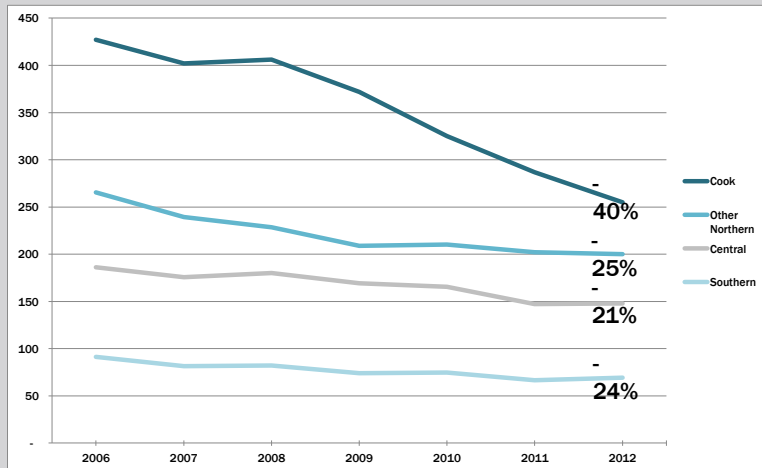


VARIANCE, NON-COOK DETENTION CENTER POPULATION AND CAPACITY



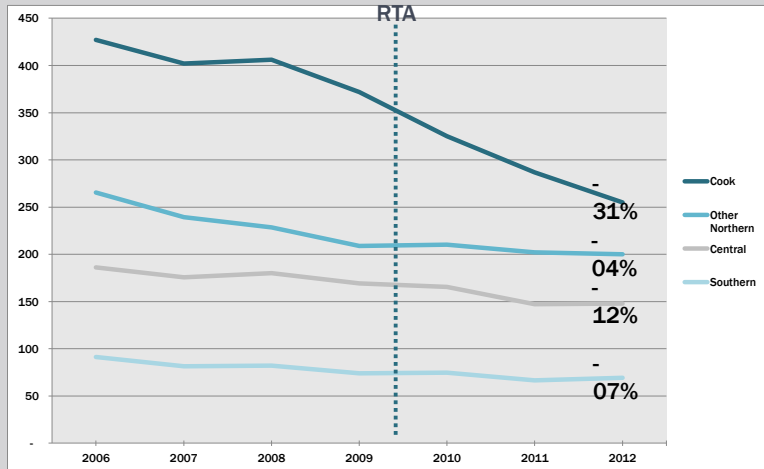
Data: JMIS, IJC

REGIONAL DETENTION CENTERS POPULATION TREND SINCE 2006

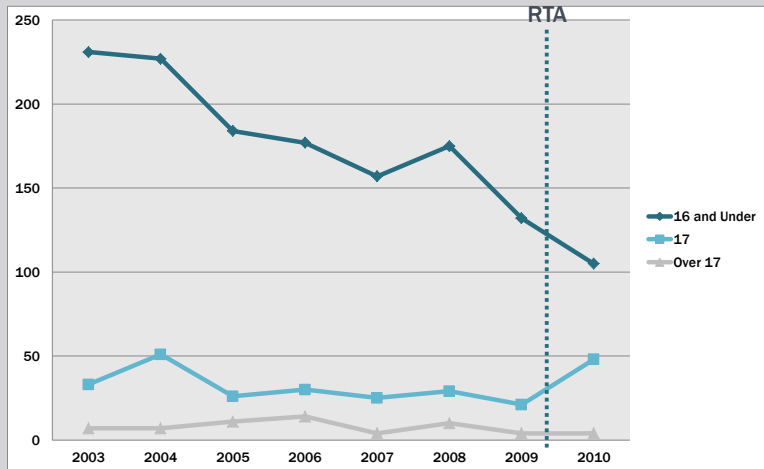


Data: JMIS, Circuit Court of Cook County

REGIONAL DETENTION CENTERS POPULATION TREND – RAISE THE AGE



IDJJ MISDEMEANOR COURT ADMISSIONS BY AGE GROUP



OVERVIEW: TRANSFER LAWS

Automatic Transfer (Excluded Jurisdiction)	
15yo (or over)	Murder, Agg. Criminal Sexual Assault, Agg. Battery with Gun, Armed Robbery with Gun, Carjacking with Gun
Mandatory Transfer	
15yo + Presumptive Transfer Crime + History	
15yo + Forcible Felony + Felony + Gang	Any Felony
Presumptive Transfer	
15yo + aggravating factors (unless clear and convincing evidence of amenability to juvenile court)	Most Class X Felonies; Firearms Discharge
Discretionary Transfer	
Any minor over 13 + probable cause + judicial finding that juvenile court is not in public's best interest	Any Offense