

# WHAT IS THE COVID-19 VACCINE?

- The first supply of COVID-19 vaccine approved by the U.S. Food and Drug Administration (FDA) began being distributed in the U.S. on 12/14/20.
- At this time, two vaccines - Pfizer-BioNTech and Moderna - have been authorized for distribution.
- The vaccine is given as an injection into the arm muscle. The vaccine will require two doses, approximately 3-4 weeks apart to achieve 94%-95% effectiveness.
- You must receive the same vaccine for both doses and will be notified of which vaccine will be available for your facility.
- The CDC's Advisory Committee on Immunization Practices (ACIP) has carefully reviewed both vaccines and recommended their use.
- The CDC recommends the vaccine even for those who have previously been COVID-19 positive. The vaccine may provide longer lasting immunity than having had the disease.



CROSBY SMITH  
AFSCME LOCAL 2645 PRESIDENT  
LUDEMAN CENTER



*"The vaccine is the way forward and being safe is the only way back to normalcy. In the long run, we're important to the operations of IDHS and the communities we serve. Since we are part of the first group, that is a strong indication that we are valued, and it indicates the compassion and understanding for our service."*

**IDHS staff have worked selflessly to care for others throughout the pandemic, and we thank you.**

**COVID-19  
VACCINE**

Coming soon.  
And you're one of  
the first in line!

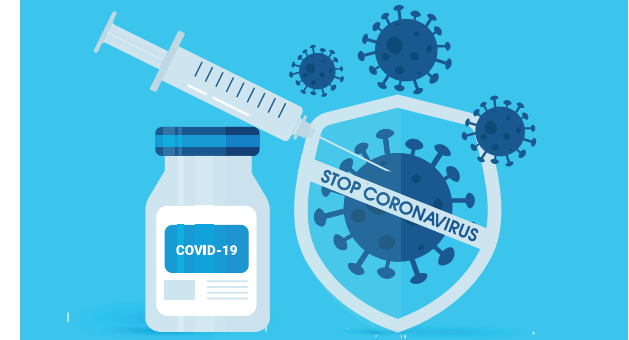
*This institution is an equal opportunity provider.*



# Human Services Vaccination Guide

STATE OPERATED FACILITIES

ILLINOIS DEPARTMENT OF  
HUMAN SERVICES (IDHS)



# NOW is the time!

You are **strongly** encouraged to vaccinate to protect against COVID-19.

**For more information:**

[DHS.ILLINOIS.GOV/COVIDVACCINE](https://dhs.illinois.gov/covidvaccine)

EMAIL QUESTIONS TO:

[DHS.COVID19@ILLINOIS.GOV](mailto:DHS.COVID19@ILLINOIS.GOV)

TEXT HERE FOR UPDATES:

VACCINE (ENGLISH) or VACUNA  
(SPANISH) to 552020\*

\* Message and Data Rates May Apply

<https://www.communityconnectlabs.com/terms-of-conditions-and-use>;

<https://www.communityconnectlabs.com/privacy>



### **WHEN AND HOW CAN I GET MY VACCINE?**

- Residents, patients, and staff of IDHS 24/7 State Operated facilities have been given priority status for vaccination in the first phase of vaccine roll out.
- It is anticipated that vaccines will be available at DHS facilities within the next 2-4 weeks.
- You will be notified by your Center Director or Hospital Administrator regarding the exact dates for the vaccinations.
- Vaccines will be distributed by IDHS or Walgreens staff.
- Vaccinations will be provided on-site.
- Employees will receive paid time when there is a need to stay beyond normal work shifts, come in early prior to work shifts, or come in on a regularly scheduled day off to receive the vaccine.
- You will receive two consent forms (one for each vaccine dose) for completion, signature, and return as soon as possible to your workplace's Human Resource Department.

#### **For more information:**

[DHS.ILLINOIS.GOV/COVIDVACCINE](https://dhs.illinois.gov/covidvaccine)

EMAIL QUESTIONS TO:

[DHS.COVID19@ILLINOIS.GOV](mailto:DHS.COVID19@ILLINOIS.GOV)

TEXT HERE FOR UPDATES:

VACCINE (ENGLISH) or VACUNA  
(SPANISH) to 552020\*

\* Message and Data Rates May Apply

<https://www.communityconnectlabs.com/terms-of-conditions-and-use>  
<https://www.communityconnectlabs.com/privacy>

### **IS THE VACCINE SAFE?**

- Yes. Please visit the CDC website for more information about the safety of the vaccines.
- The vaccine has been authorized for distribution through a rigorous scientific and regulatory process.
- Large, multi-step clinical trials by Pfizer and Moderna enrolled more than 70,000 people.
- Clinical trials have found that the Pfizer vaccine is safe for individuals 16 years of age and older and 95% effective. Clinical trials have found that the Moderna vaccine is 94% effective for individuals 18 years and older.
- After a vaccine is authorized or approved for use, vaccine safety monitoring systems watch for adverse events and side effects. Those results are reported directly to the CDC.
- Upon receiving the COVID-19 vaccine, you cannot become infected, because the vaccine contains no live virus. Instead, the vaccine prompts your body to produce a protein that teaches your body how to fight off the virus.
- The COVID-19 vaccine may cause mild symptoms, such as brief pain at the injection site, fever, headache, and muscle aches. These symptoms represent the immune system's natural reaction to the vaccine.
- While serious allergic reactions were not seen in vaccine clinical trials of thousands of patients, rare allergic reactions to vaccines are possible.
- If you have a history of serious allergic reactions, you should discuss vaccination with your healthcare provider.
- Everyone who receives the vaccination will be observed for at least 15 minutes after receiving the vaccination.

### **WHAT ELSE SHOULD I KNOW?**

#### **WILL THE VACCINE BE REQUIRED?**

*No. The vaccine is voluntary.*

#### **WHAT WILL THE VACCINE COST ME?**

*Nothing. Vaccines will be available at no cost despite ability to pay or insurance coverage.*

#### **WHO SHOULD NOT RECEIVE OR DELAY IN RECEIVING A VACCINE?**

*Consult with your doctor as to whether you should receive the vaccine, if you:*

- Had a severe allergic reaction after a previous dose of this vaccine or any ingredient of this vaccine

*You should delay vaccination if:*

- You have been diagnosed with COVID-19 in the past 14 days
- You have a fever or other illness on the day of the clinic.
- You received a vaccination for flu within the last 14 days.

*You should consult with your doctor if:*

- You are pregnant or breastfeeding

#### **HOW LONG DOES THE VACCINE LAST?**

*Follow up studies about the length of immunity are being conducted right now.*

#### **WILL I CONTINUE MASKING AND SOCIAL DISTANCING AFTER VACCINATION?**

*Yes. COVID-19 is still circulating widely in our communities. Everyone must remain vigilant with mask and PPE wearing, hand washing and social distancing requirements to ensure staff, resident, patient, family and community safety.*